

EDIE CREEK RESOURCE EXPLORATION DRILLING PLAN

Objective:

Initially drill -evaluate potential for bulk tonnage, low grade mine-able oxide and primary resource, and if warranted, to quickly progress to a stage two extensive JORC compliant Resource definition infill drilling.

Introduction

An initial 2800m of diamond core (DC) and reverse circulation (RC) drilling is proposed to be drilled between Edie Lodes and Enterprise/Karuka areas. Ten holes totalling 2000m will be DC and RC holes drilled mainly at Enterprise/Karuka area while 4 diamond holes totalling 840m will be drilled at the east portion (alpha east and alpha west) of Edie Lode. At least three drill holes have been proposed to be drilled at the Edie creek Lode area, two of which (holes EDD017 and EDD018) are designed to test the east strike extension of the high grade visible gold that was recently mined (1000 oz Au 2014-15) in the AE edie lode vein near Edie creek. See plan figure 2.

The results will also serve as part of the actual data needed to estimate a contained gold resource within the designed pit where excavation has already commenced. Pending good results from these two holes more holes in the 2nd phase follow up program will be drilled at a 30-40m grid, laterally and vertically to improve confidence. The third hole EDD019 located in the camp is designed to test what is interpreted to be a structure confluence zone where major mineralised (Edie and Inopai vein) structures intersect and also where good gold was mined from the diatrema nearby.

Other RC/DC drill holes proposed will be to test the down dip extents of the number of parallel gold carrying veins mapped on the surface at the Enterprise and Karuka areas. Other follow up drilling to extend or infill will depend on results received from these holes. See plan figure 7.

Table 1: Proposed Drill Holes and Targets Summary Details for Alpha East

Proposed Hole ID	Proposed Drill Collar Coordinates			Proposed Drill Projections			Expected Target Depth Interval m	Drill Justification /Reasons
	East	North	RL	Azim. (mag)	Dip	EOH Depth		
EDD017	462809	9185996	2071	30	-67	155	45 - 65m	Test east extension or continuity of gold mineralisation observed/mined (~ 720t @ 44g/t for 1000 ounces gold. -Aug14-Apr15) on AE edie lode at 462,744E /9,186,044N /2,044m asl coordinate point
EDD018	462810	9185996	2071	111.5	-64	170	45 - 65m & 90-120m	Test two targets: 1.) further east extension or continuity of gold mineralisation observed/mined (~ 720t @ 44g/t for 1000 ounces gold. -Aug14-Apr15) on AE edie lode at 462,744E /9,186,044N /2,044m asl coordinate point and
								2.) test the intesection of edie lode and the NE trending structure at 462,830E /9,185,987N /2074m asl
EDD019	462640	9185944	2064	85	-60	330	88 -99m	Test four targets: 1.) test the interpreted north strike extension of Ingopai mined in the south of camp
							145 -160m	2.) test main Edie Creek - Kerimenge regional structure within 40m radius of its intersection with Ingopai structure and also gold bearing diatreme
							210 - 265m	3.) test interpreted northwest portion of the gold bearing diatreme where approximately 650ounces of gold was mined in 2006 by Melanesian Resources Ltd.
							270 - 300m	4.) test the NE structure(see figure 1) near its intersection with the gold bearing diatreme.
EDD020	462615	9186119	2071	40	-60	200	19-25m & 90-160m	Test targets: west extension of edie lode at depth. Expected target depths include veins at 19-25m and 90 -160 depth intervals
EDD021	462040	9186990		220	-60	200		As per Nethery drilling proposal
EDD022	461875	9186875		40	-60	200		As per Nethery drilling proposal
EDD023	461780	9186930		40	-60	200		As per Nethery drilling proposal
EDD024	461700	9187000		40	-60	200		As per Nethery drilling proposal
EDD025	461890	9187135		220	-60	200		As per Nethery drilling proposal
EDD026	461880	9187225		220	-60	200		As per Nethery drilling proposal
EDD027	461760	9187150		220	-60	200		As per Nethery drilling proposal
EDD028	461625	9187160		220	-60	200		As per Nethery drilling proposal
EDD029	462060	9187090		220	-60	200		As per Nethery drilling proposal
EDD030	462150	9186975		220	-60	200		As per Nethery drilling proposal

Total drill meters: 2855

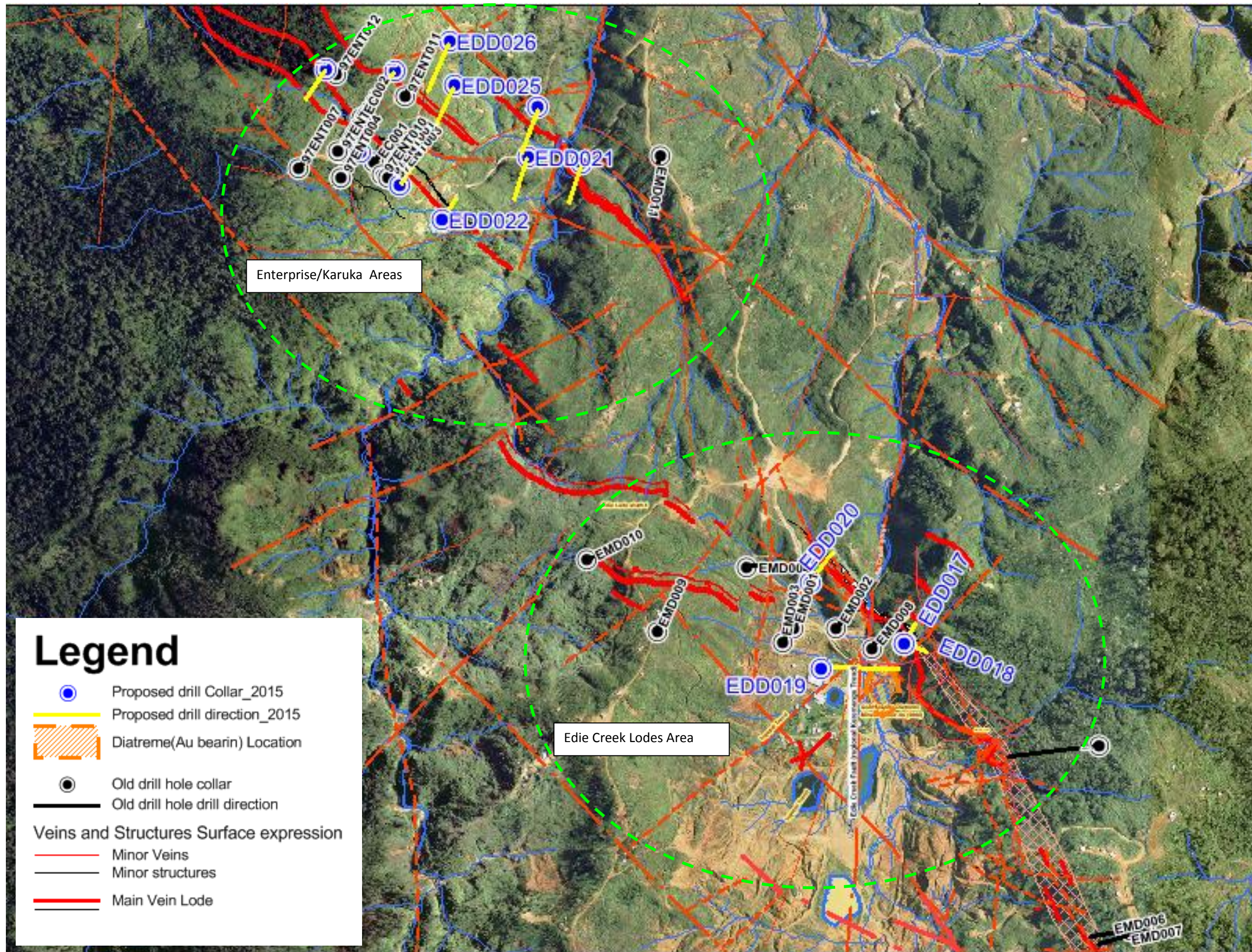


Figure 1: Proposed Drill holes and existing old drill holes Locations at Enterprise/Karuka and Edie Lode(east portion) areas.

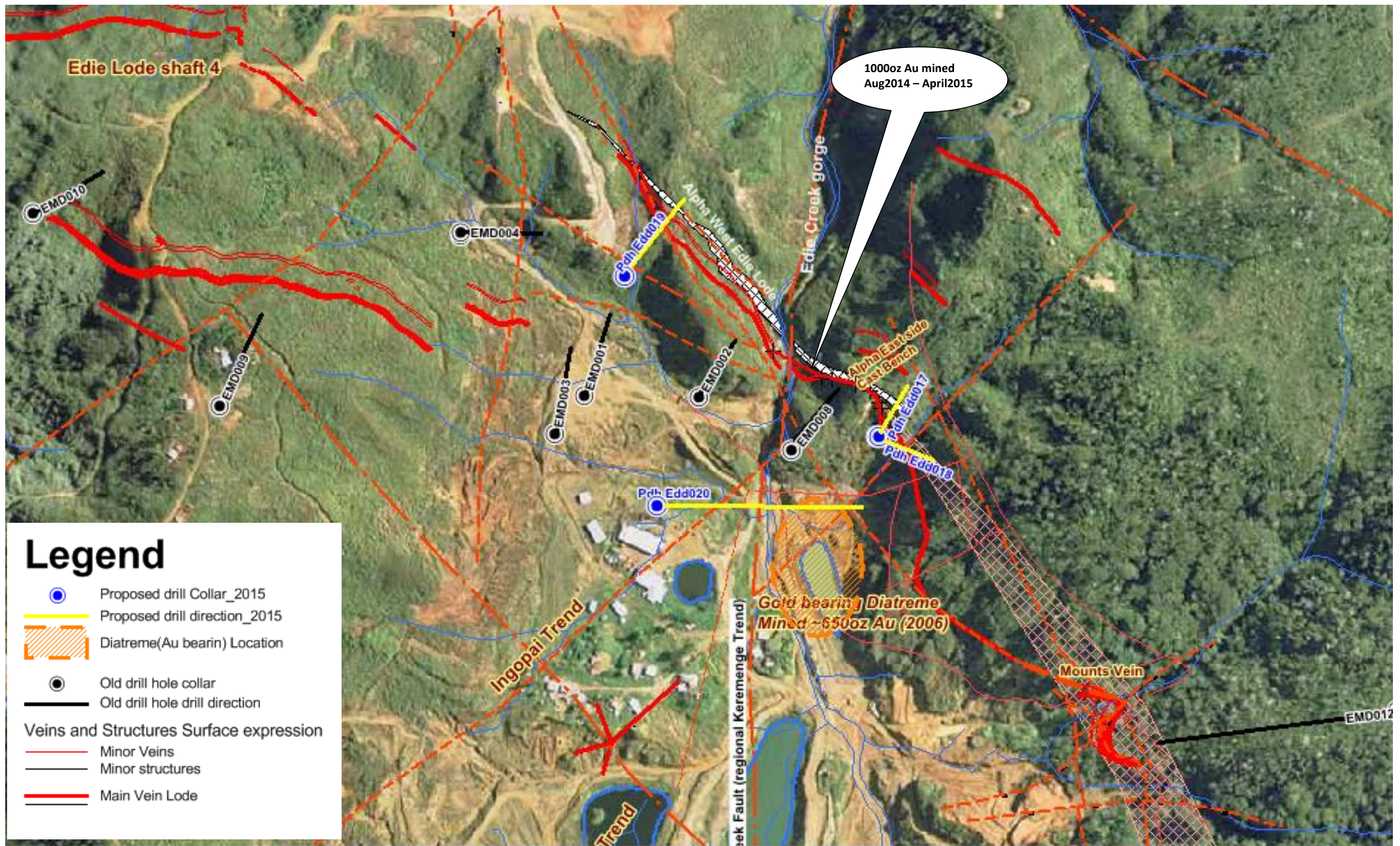
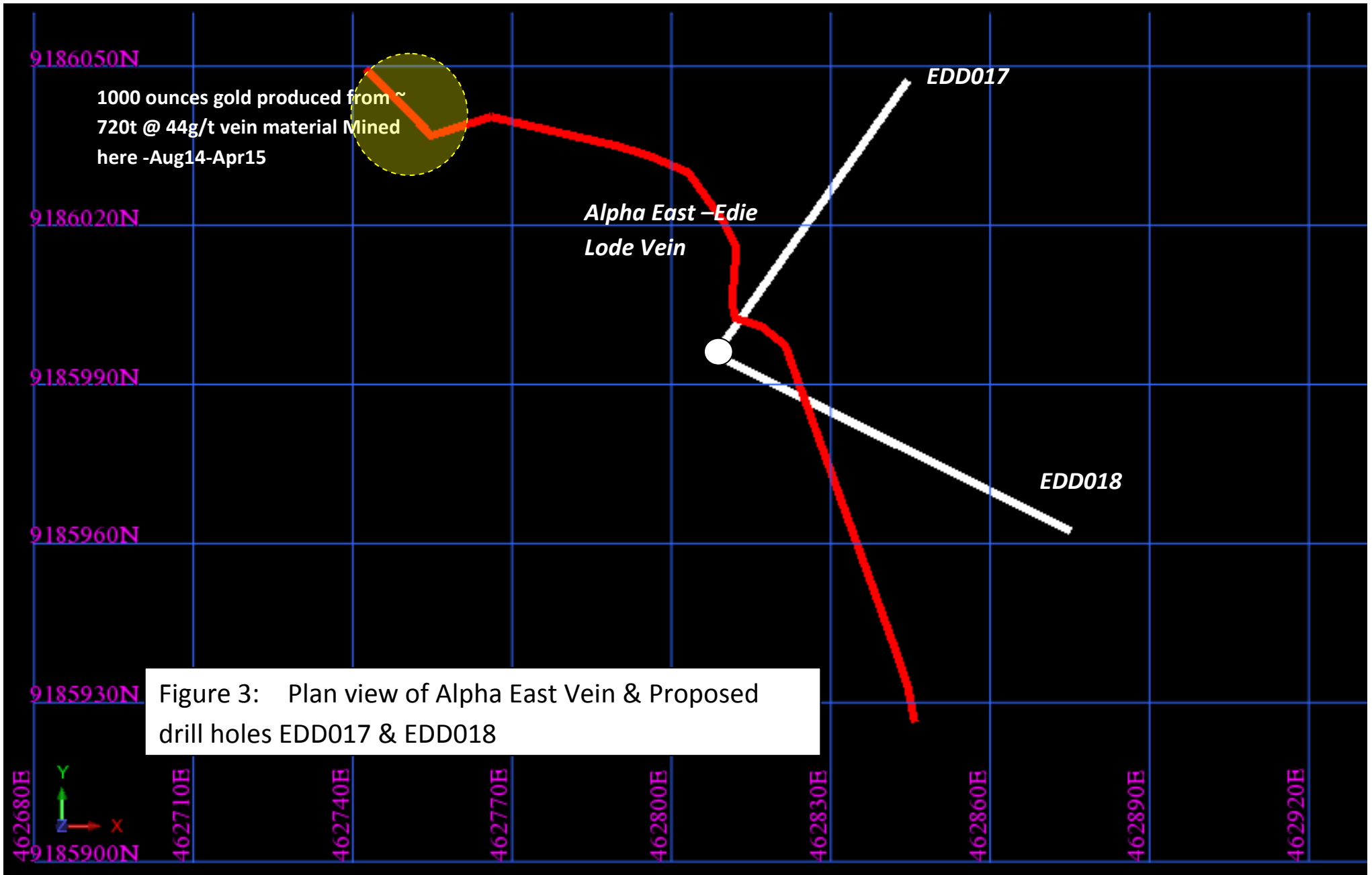
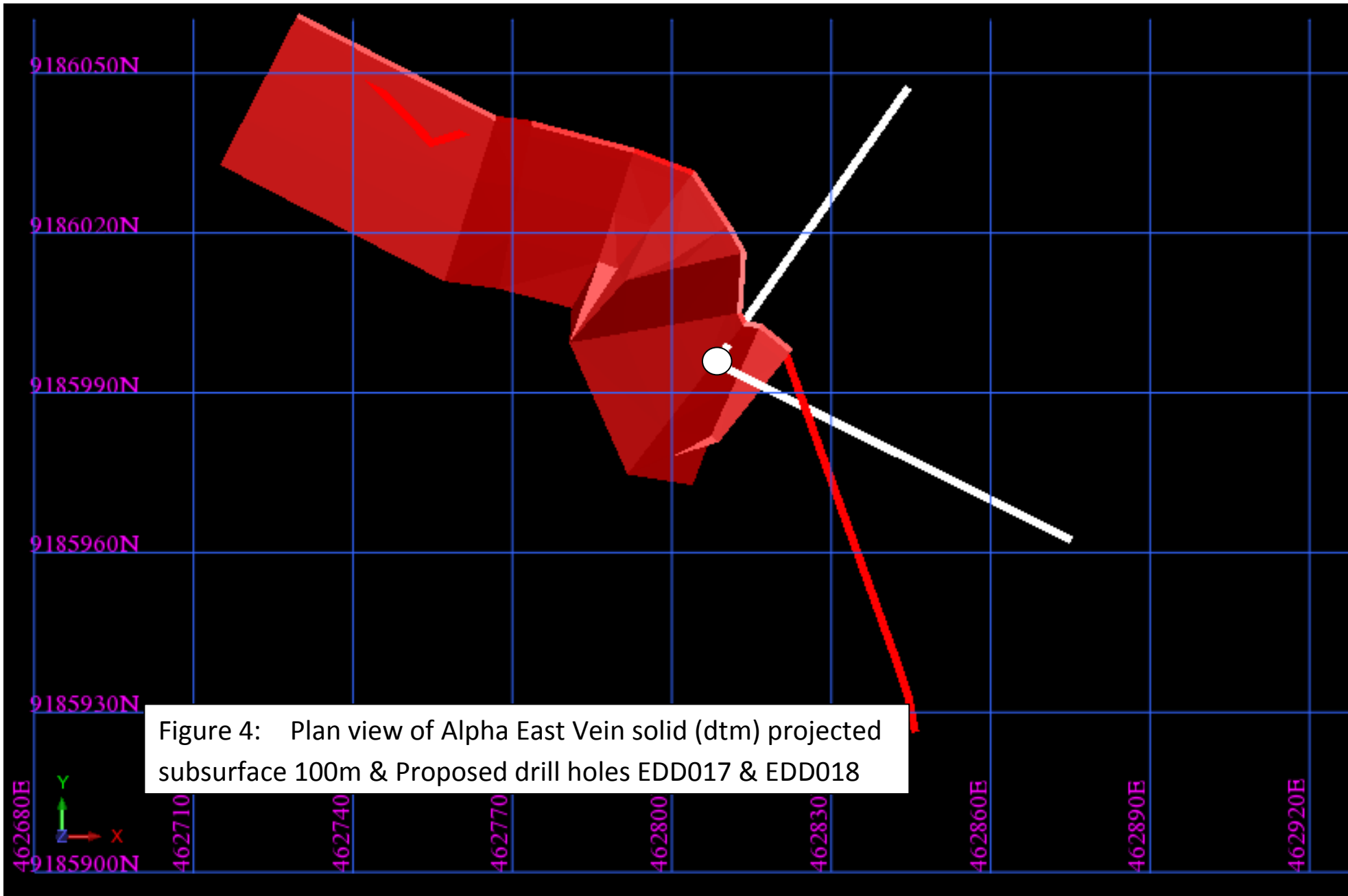
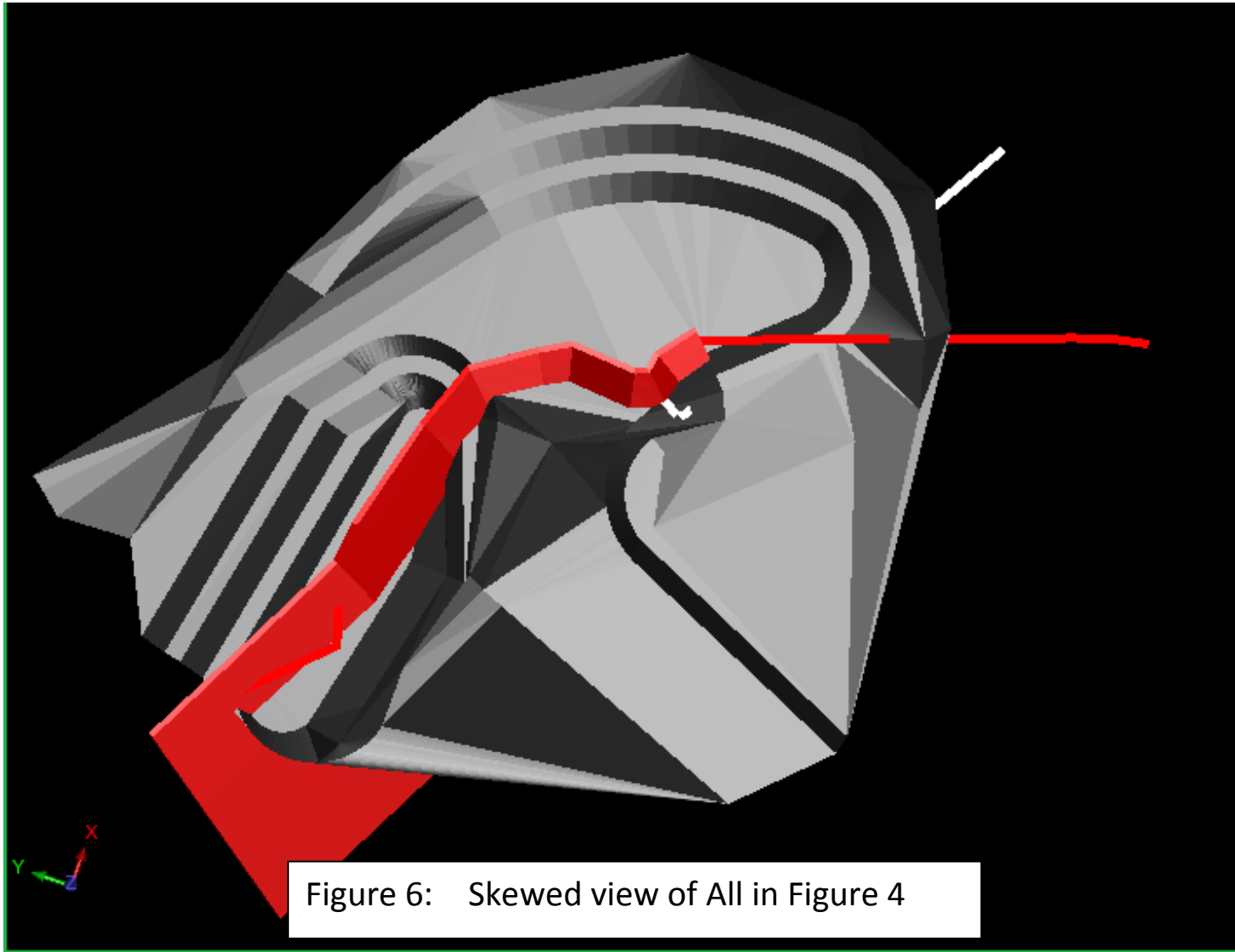


Figure 2: Proposed Drill Locations with drill direction and target structures at east portion of Edie Lode.







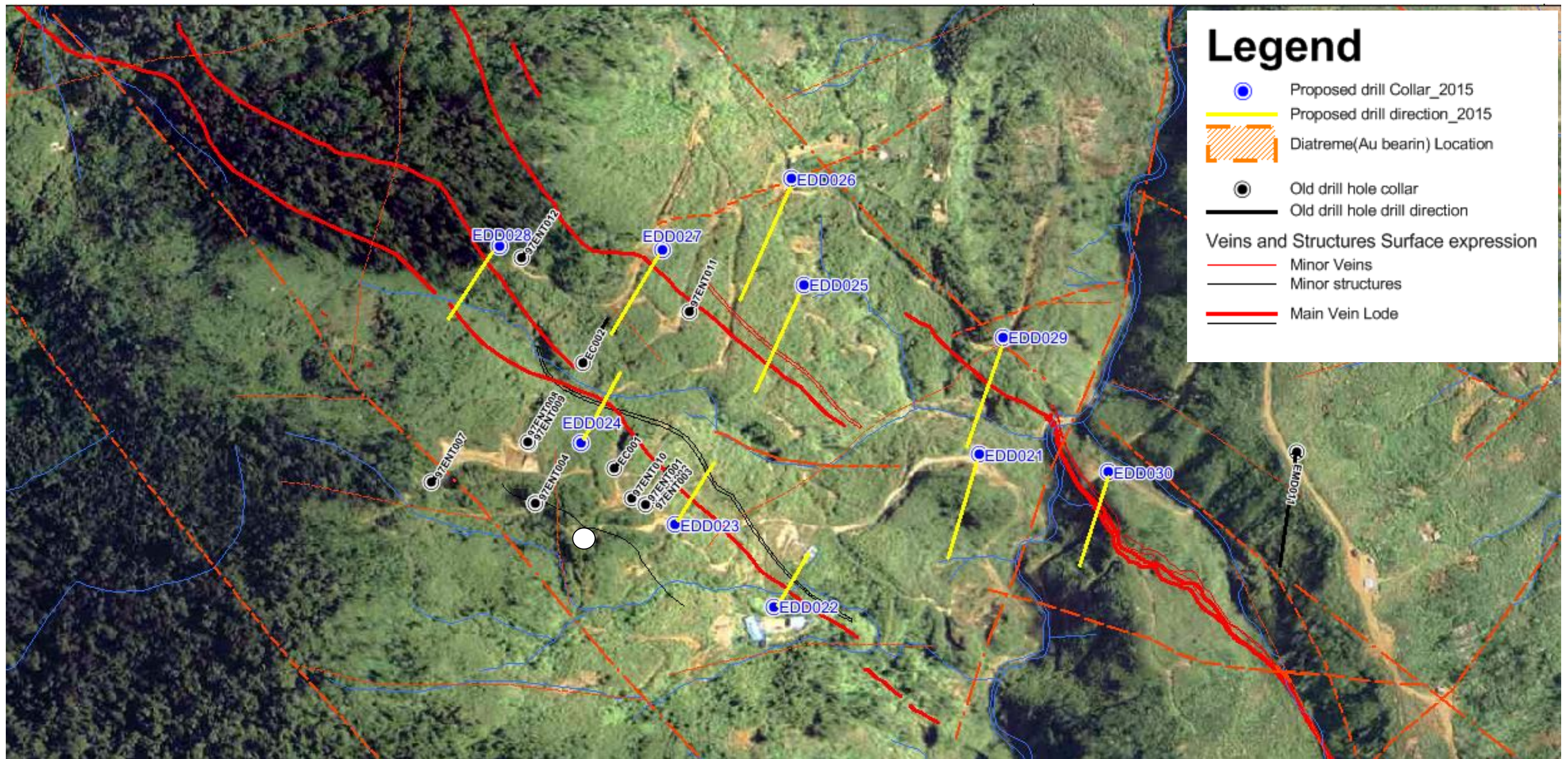


Figure 7: Proposed RC/DC Drill Locations with drill direction and target structures at Enterprise and Karuka Areas.

By Lewis Koesi

Edie Creek – Niuminco Group Limited

Date: October 2015

