



# Niuminco Group Limited

---

*Level 8, 139 Macquarie Street, Sydney NSW 2000 Australia*  
*Tel: (02) 8231 7048 Fax: (02) 9241 5818 Email: mohlsson@niuminco.com.au*  
*ABN 44 009 163 919*

8<sup>th</sup> August 2012

Company Announcements  
Australian Stock Exchange

## **Mincor Resources NL Presentation**

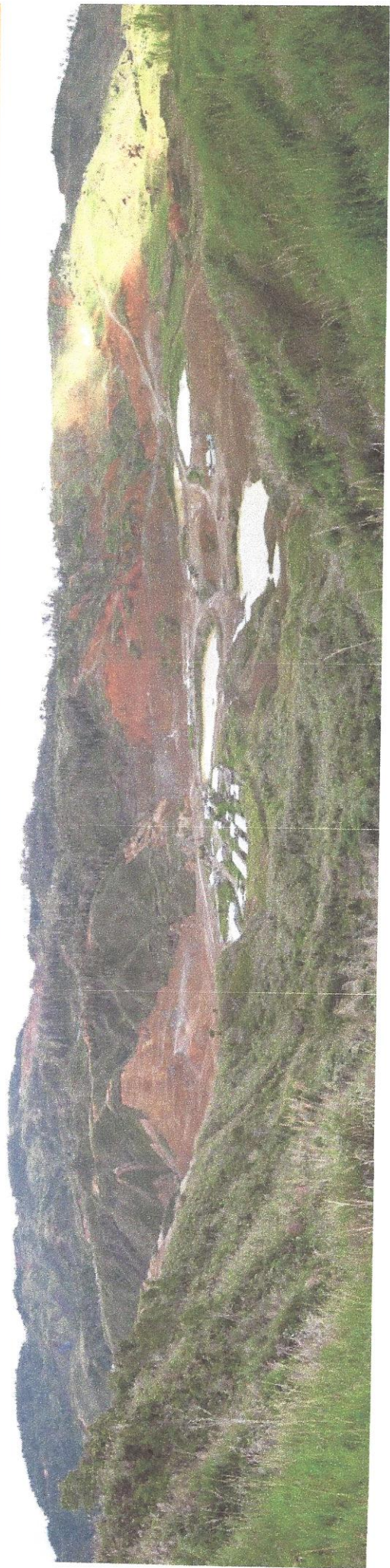
The attached information is an extract from a presentation to the Diggers & Dealers Conference in Kalgoorlie by Mincor Resources NL with respect to the Company's joint venture areas in Papua New Guinea.

Mark Ohlsson  
Company Secretary



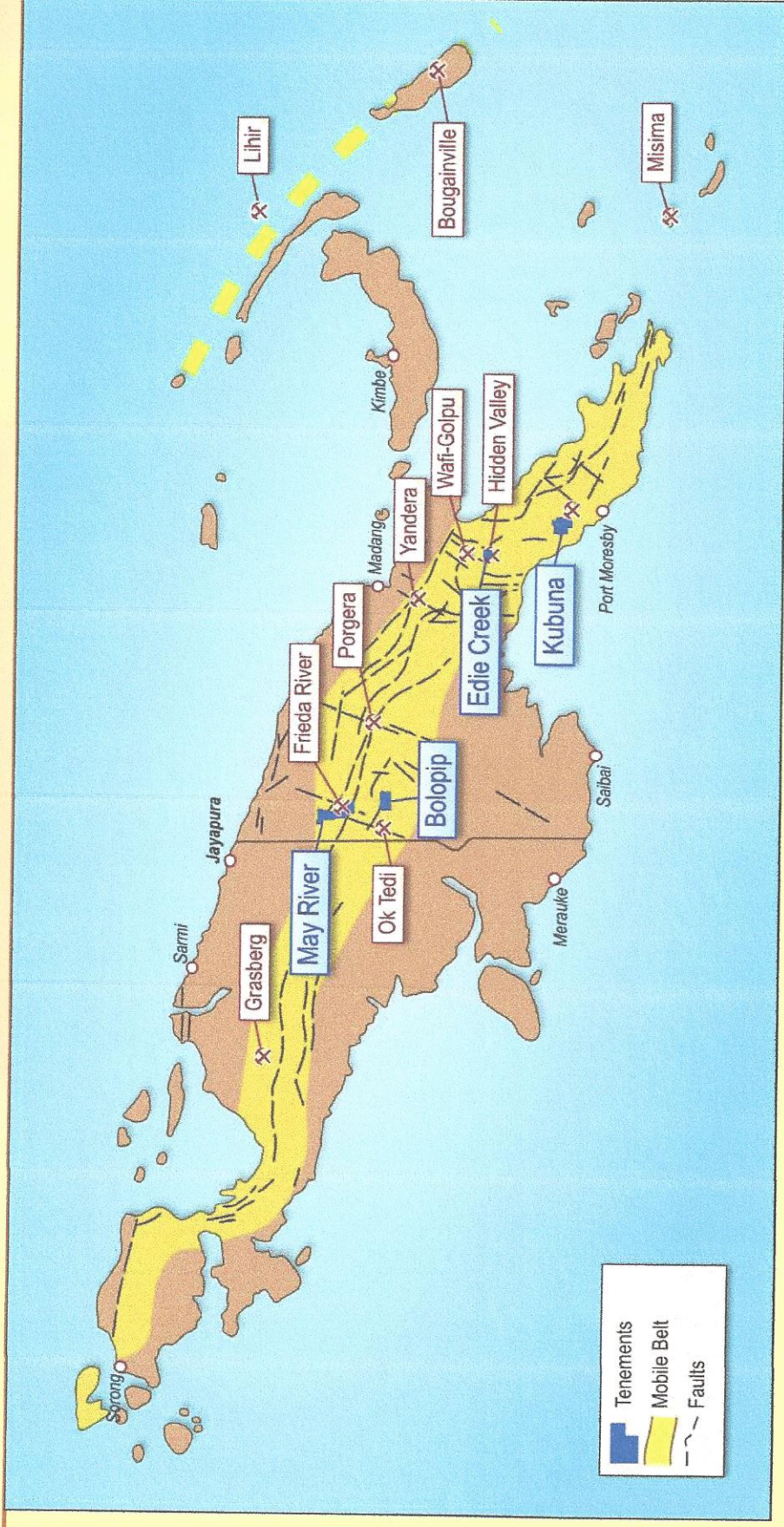
**M I N C O R**

# **Papua New Guinea**





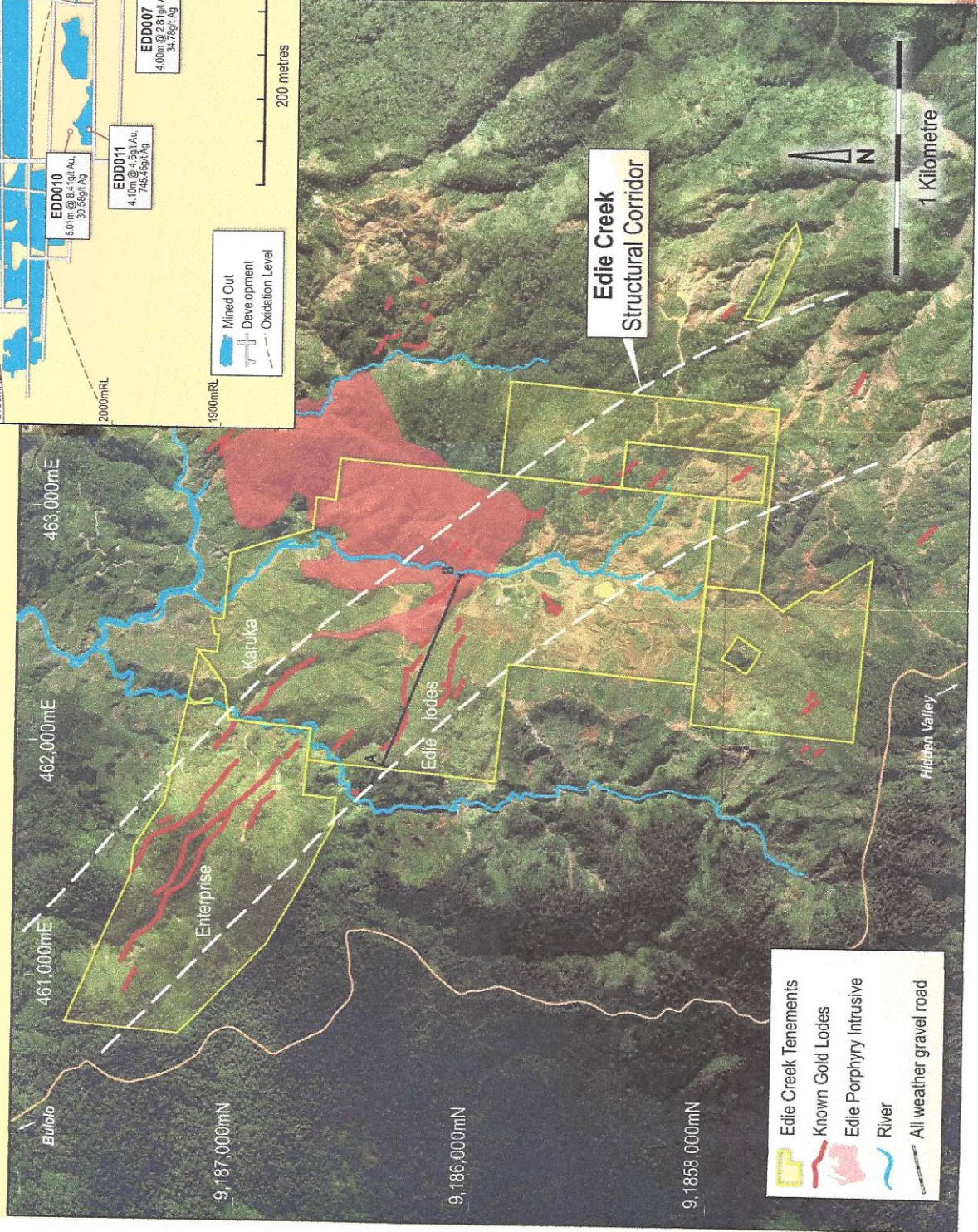
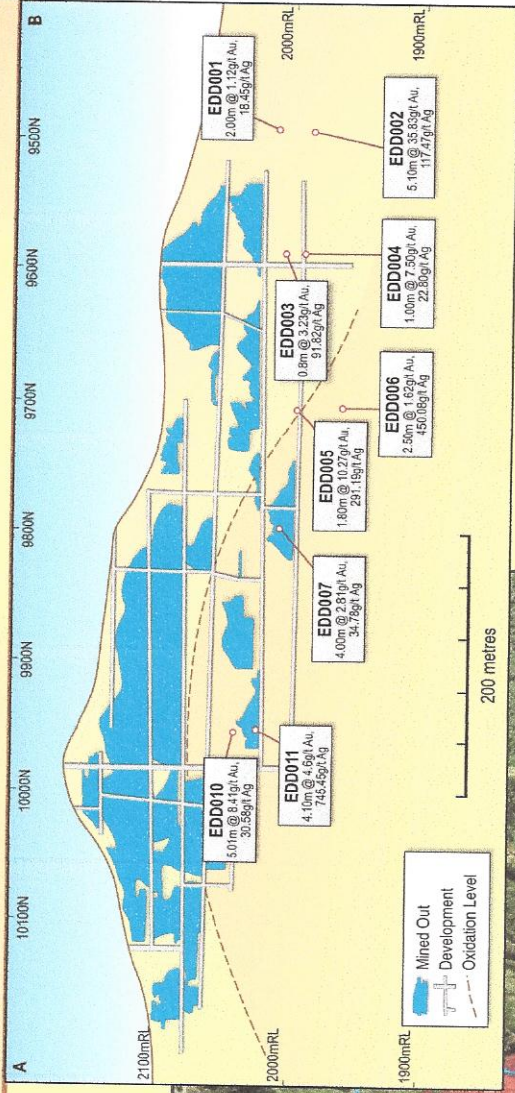
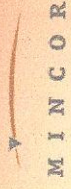
# World Class Geological Province



- World class mineral province - Mincor in earn-in JV with Niuminco
- Commencing drilling programme now at Edie Creek – Epithermal Gold near Hidden Valley
- Major Copper-Gold anomaly delineated at Bolobip – Porphyry target near Ok Tedi
- Porphyry-style geophysical anomaly at May River – Porphyry target within Freida River Complex



# Edie Creek Epithermal Gold

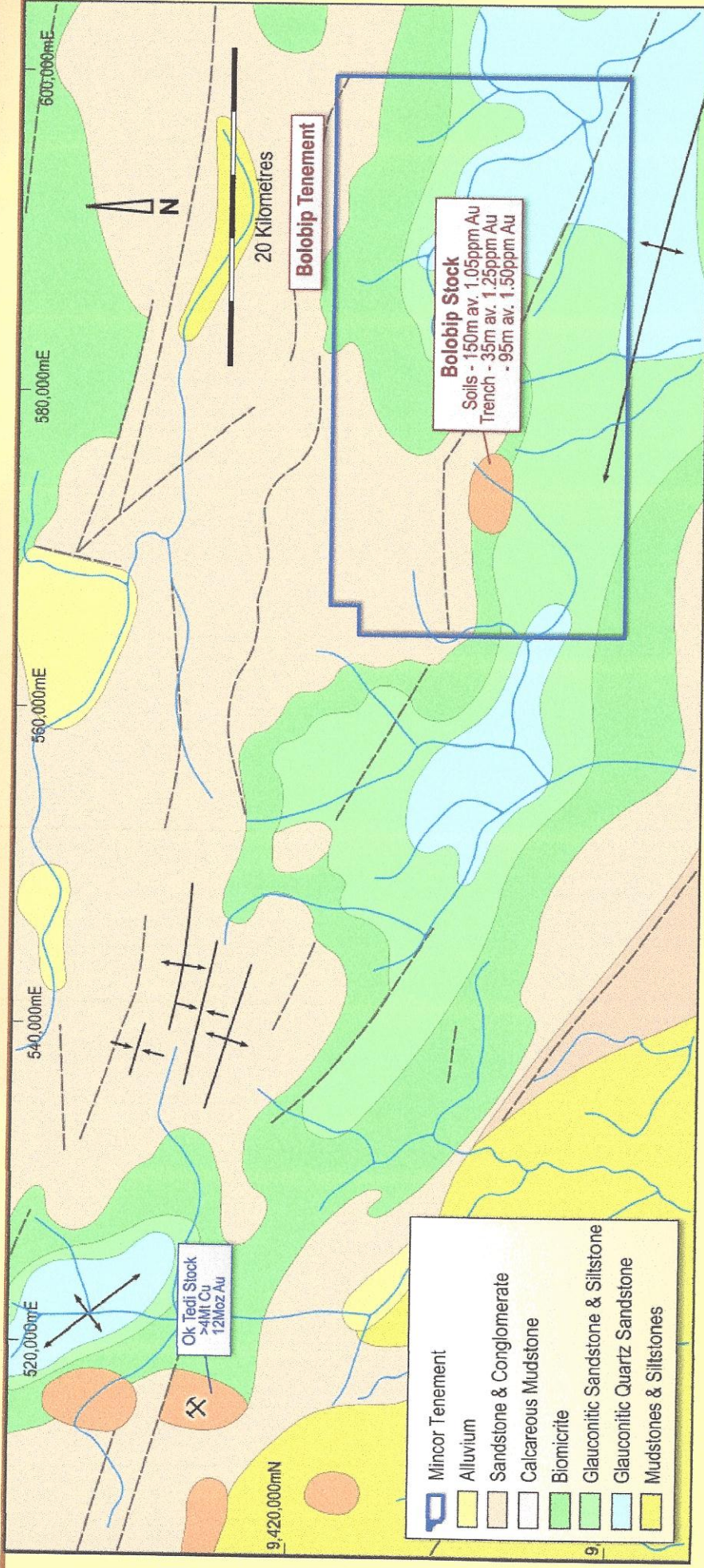


- Edie Creek Tenements
- Known Gold Lodes
- Edie Porphyry Intrusive
- River
- All weather gravel road

461,000mE    462,000mE    463,000mE  
 9,187,000mN    9,186,000mN    9,1858,000mN  
 Edie Creek  
 Karuka  
 Edie Lodes  
 Enterprise  
 Hidden Valley



# Bolobip Exploration Licence

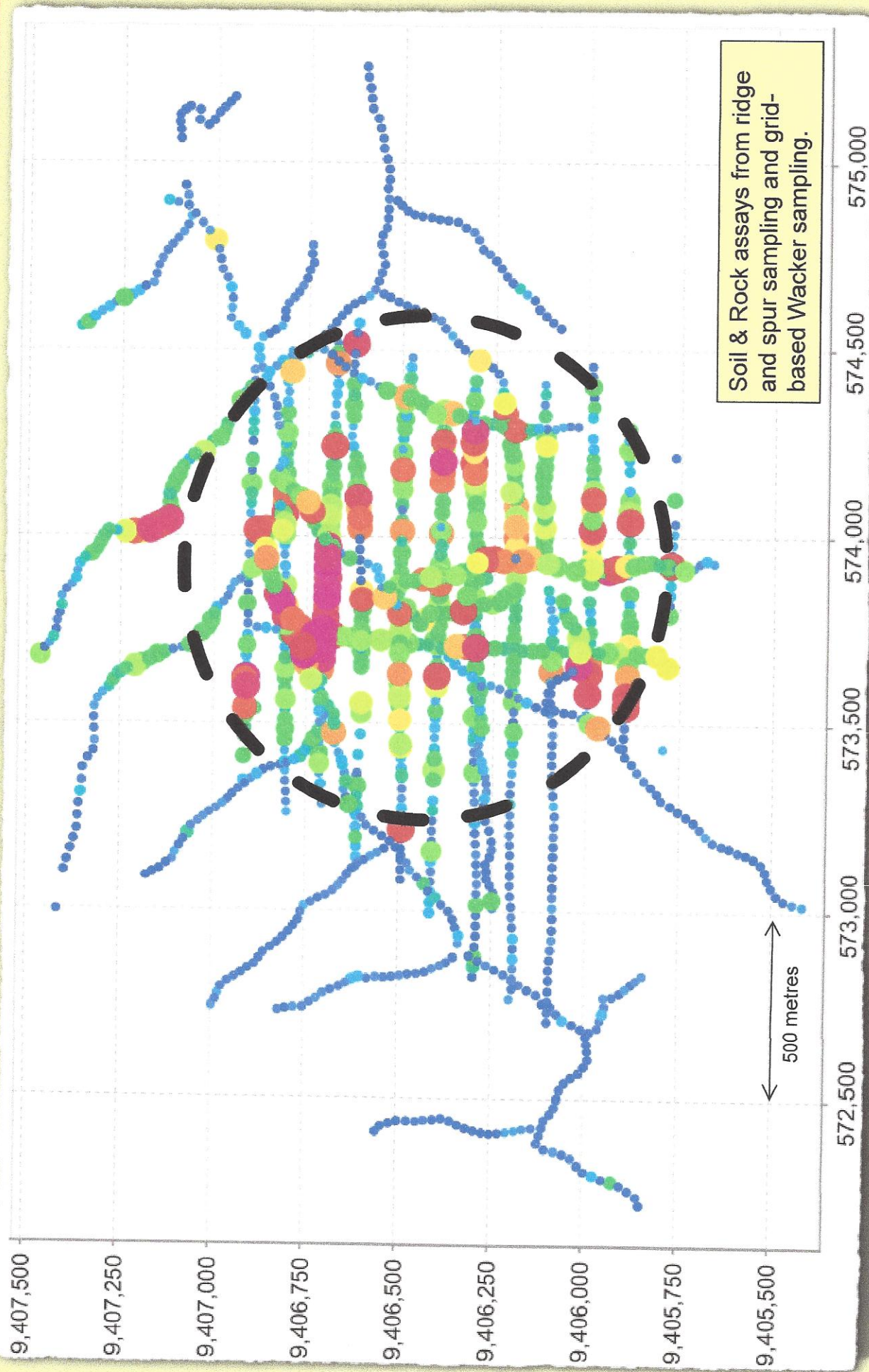


• **Bolobip Stock** – 60km east of Ok Tedi - a major copper-gold Porphyry target:

- A multi-phase intrusive complex. No drilling and no geophysics.
- Latest data shows **coherent 1km diameter copper and gold anomaly**, with peripheral lead and zinc.
- Classic geochemical signature of a leached cap above a mineralised copper-gold porphyry system.
- Extensive surface gold mineralisation in trench channel samples (CRA).
- **Mincor earning 72%**

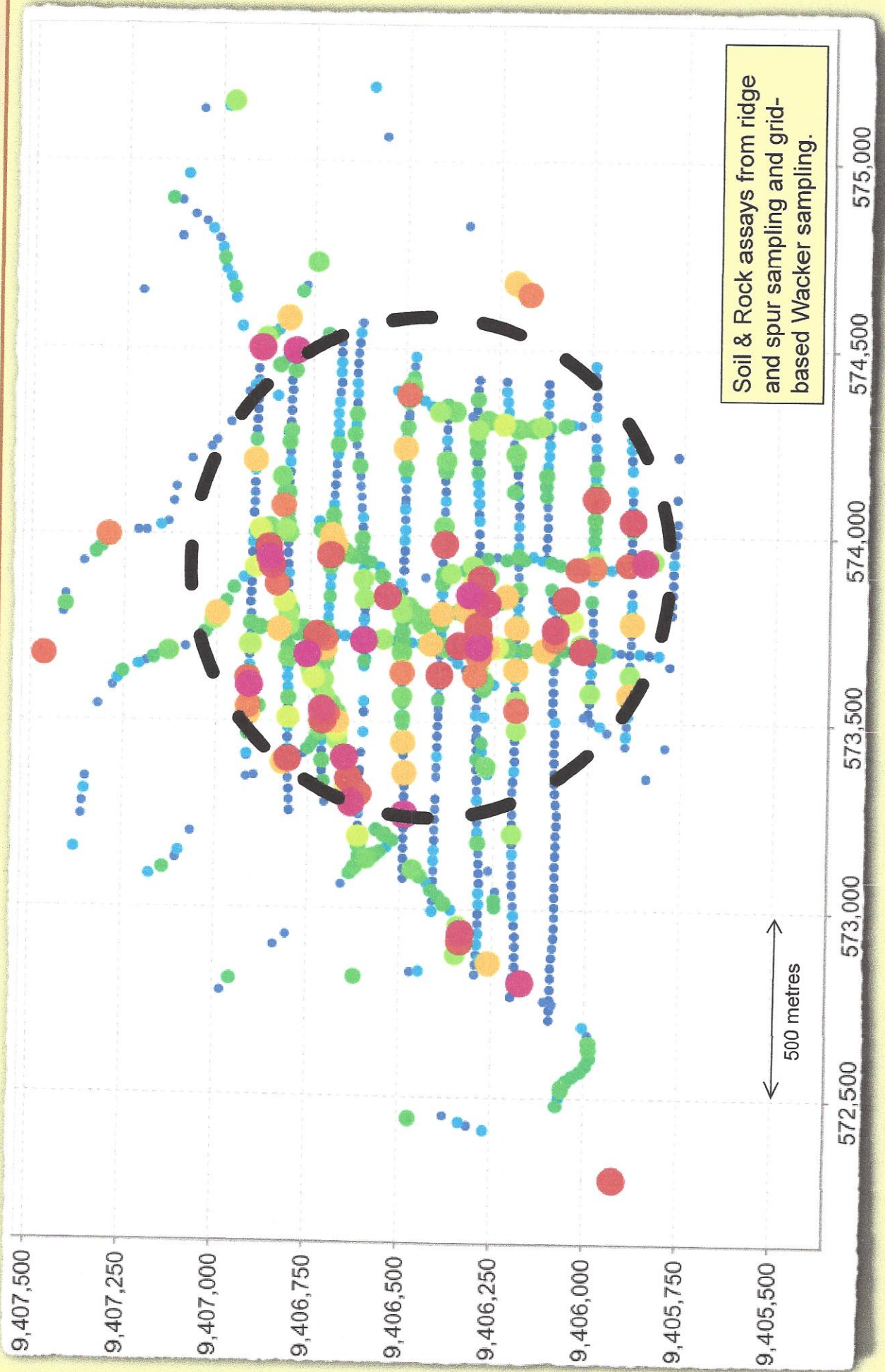


# Bolobip – 1km Diameter Copper anomaly



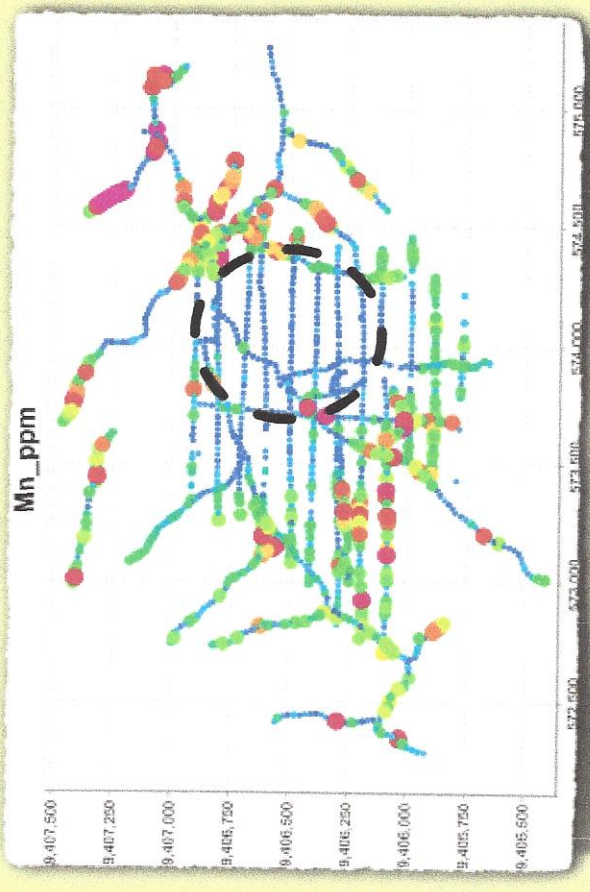
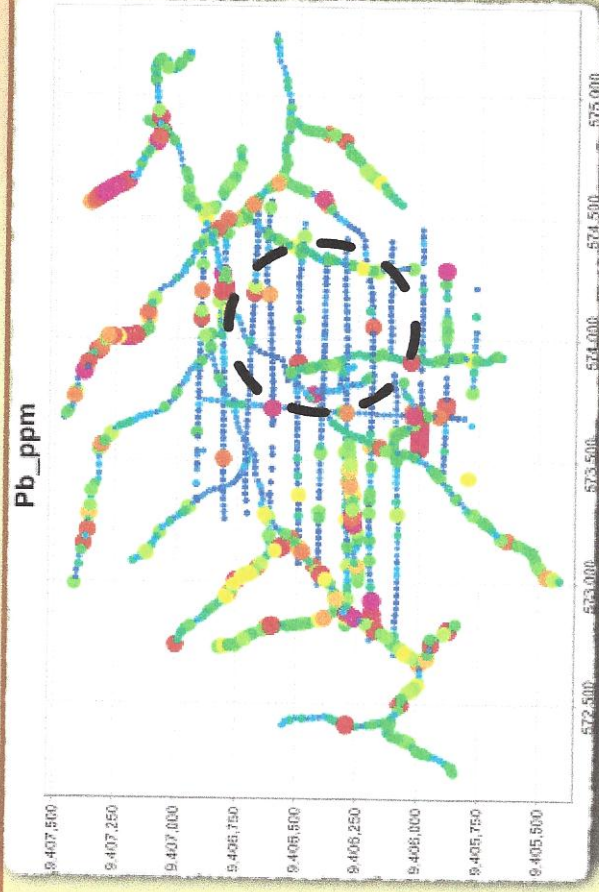
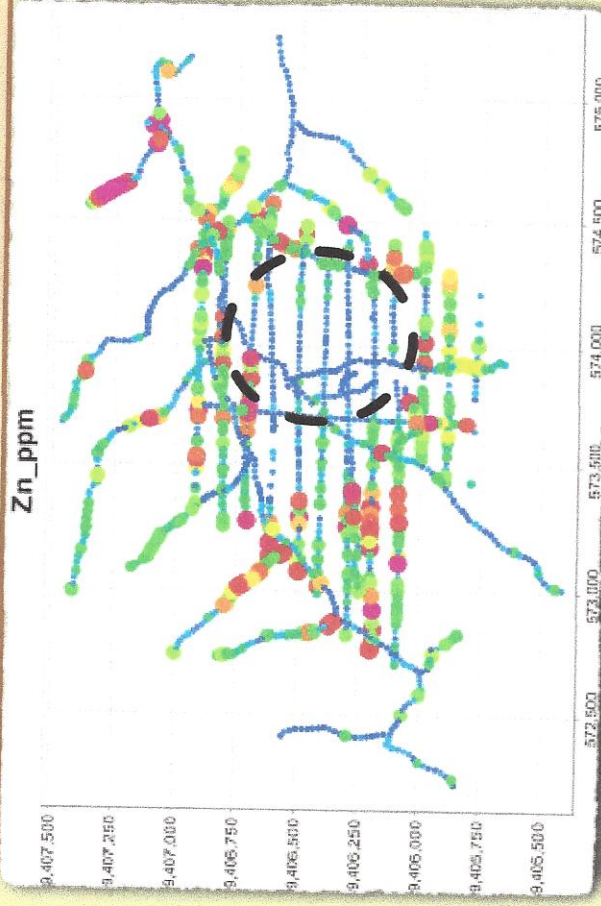


# Bolobip – Co-incident Gold Anomaly





# Bolobip – Rimming Zn-Pb-Mn



## Provisional interpretation:

- 1km x 1km Copper-Gold anomaly = leached cap above mineralised Copper-Gold Porphyry body
- Typical development of peripheral zinc-lead mineralisation
- Typical epithermal gold mineralisation through centre
- Xenoliths suggest ground surface is near the top of the system