



Niuminco Group Limited

Suite 50, 14 Narabang Way, Austlink Corporate Centre, Belrose NSW 2085, Australia
Tel: (02) 9450 0828 Fax: (02) 9450 0877 Email: info@niuminco.com.au
ABN 44 009 163 919

QUARTERLY ACTIVITIES REPORT

JUNE QUARTER 2014

**WORLD CLASS
GEOLOGICAL PROVINCES**



Papua New Guinea **Tasmania**

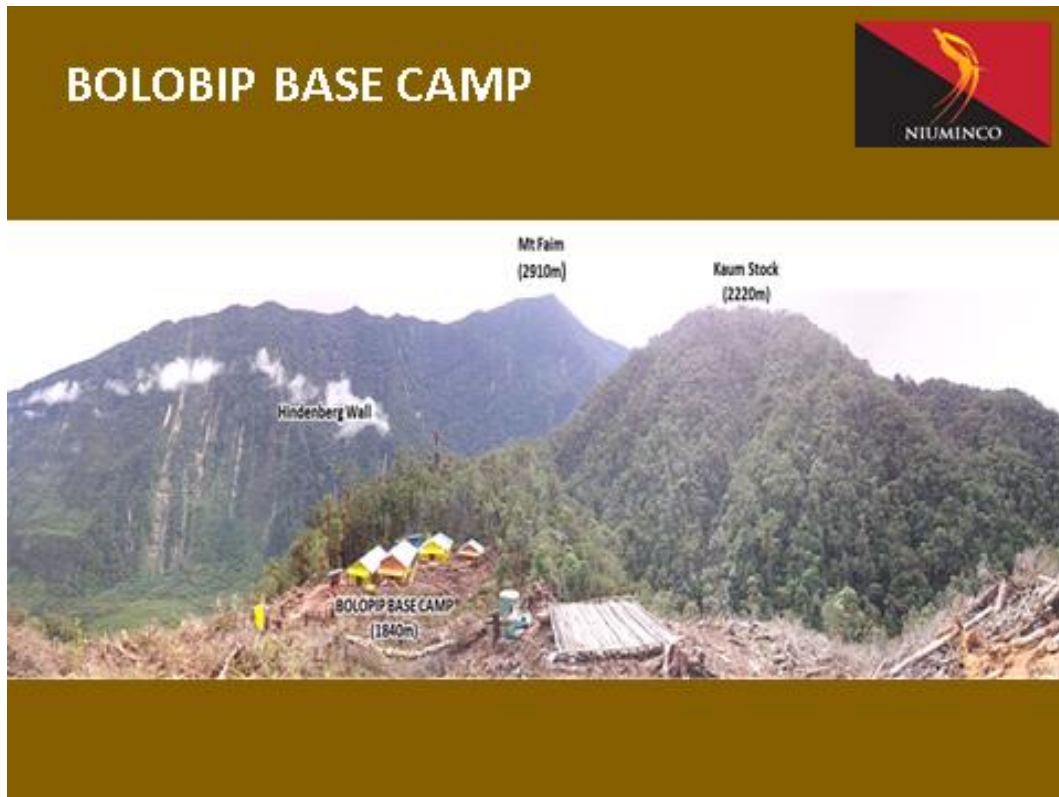
HIGHLIGHTS AND SIGNIFICANT EVENTS

During the June Quarter the Company achieved and announced a number of significant events:

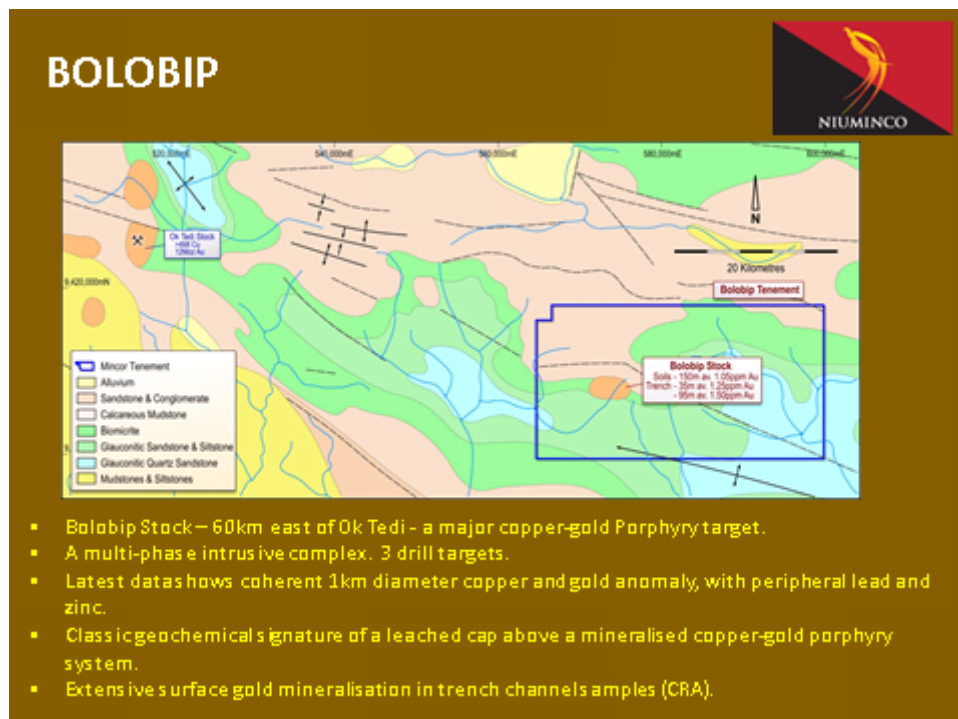
- **An Inferred Mineral Resource for its 72.55% owned TNT Mines Limited's Royal George tin deposit in north-eastern Tasmania, Australia**
- **The renewal of 2- year extension terms to subsidiary Niuminco (ND) Ltd's EL1441 May River and EL1438 Bolobip exploration licences through to September 2015 in Papua New Guinea**
- **The production and sale of 2,857.3 g (91.9 ounces) of gold and 2,279.5g (73.3 ounces) of silver for \$123,000 at an average grade of 52.97 g/t from the Edie Creek mine.**
- **The raising of \$210,000 equity from the one for five Rights Issue at \$0.005 per share.**

PAPUA NEW GUINEA PROPERTIES

Bolobip and May River

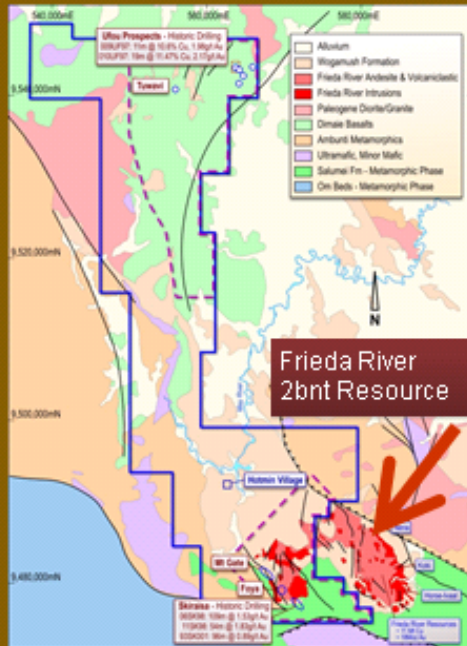


Significant camp maintenance, upgrading and repair work was carried out on the Bolobip tenement during the quarter in preparation for the proposed drilling program.



In addition, quotes were received for necessary repair and upgrading works at the May River camp to prepare for groundwork on this tenement.

MAY RIVER



SKIRASIA HISTORIC DRILLING:

06SK98
109m @ 1.53g/t Au

11SK98
54m @ 1.83g/t Au

93SK001
96m @ 0.89g/t Au

UFOU PROSPECTS:

009UF97
11m @ 10.6% Cu, 1.98g/t Au

010UF97
19m @ 11.47% Cu, 2.17g/t Au

2-year extension renewals were granted during the quarter for EL 1441 at May River and EL 1438 at Bolobip, through to September 2015.

HOTMIN – BASE FOR MAY RIVER



- Niuminco's base camp acts as a regional exploration base at Hotmin.
- Ideal locality in centre of May River Exploration Licence.
- Existing airstrip, and major supplies brought in by low-cost river transport.
- A major airborne geophysical survey completed.
- Airborne VTEM and ZTEM, covering North & South May River completed.



Edie Creek



In February, following the 10 year extension of mining lease ML 144 to September, 2022, a decision was made to recommence pilot mining, large scale sampling and gold/silver production at Edie Creek utilizing the existing plant, equipment and current staffing levels.

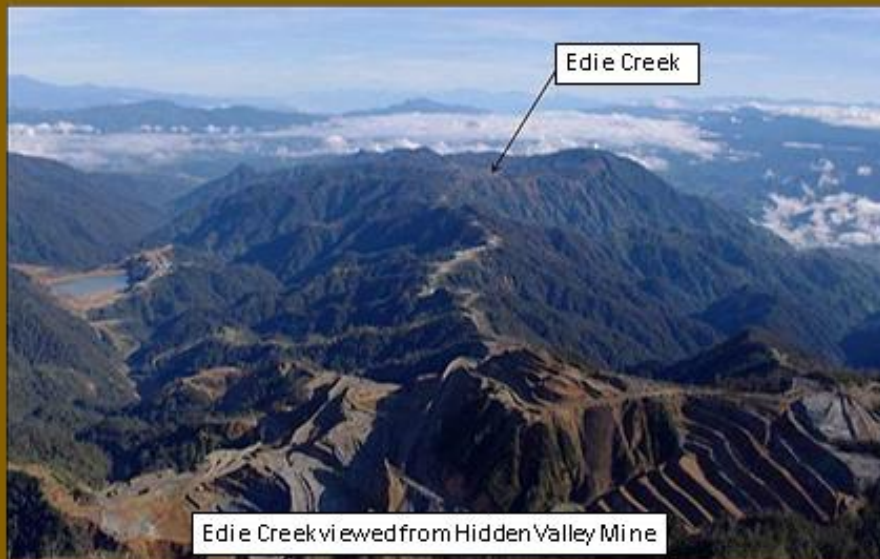
Production for the period 1 April to 30 June, 2014 was 2,857.3 g (91.9 ounces) of gold and 2,279.45 g (73.3 ounces) of silver for total sales of AUD\$123,000.

A total of 53.94 wet tonnes of ore was processed at an average grade of 52.97 grams per tonne.

Mining and processing was significantly disrupted by mining equipment breakdowns, and the inability to use the large excavator on very wet days. To overcome these problems, another lighter, low-hours, second hand “back-up” excavator has been purchased utilising finance company funding. In addition, a third gold processing barrel (or small rod mill) has been reconditioned and will be put into production immediately to assist in increasing the rate of ore processing.

It is anticipated that the introduction of these additional items of plant and equipment will assist in achieving the planned ramp up of gold production to 60 – 90 ounces per month in coming months, at a minimal increase in costs.

EDIE CREEK



The purchase of two second hand drilling rigs to carry out the Stage 2 drilling program was completed - one a reverse circulation rig and the other a diamond core drill rig. However, delays in transporting them to site has meant that drilling is now planned for the September quarter.

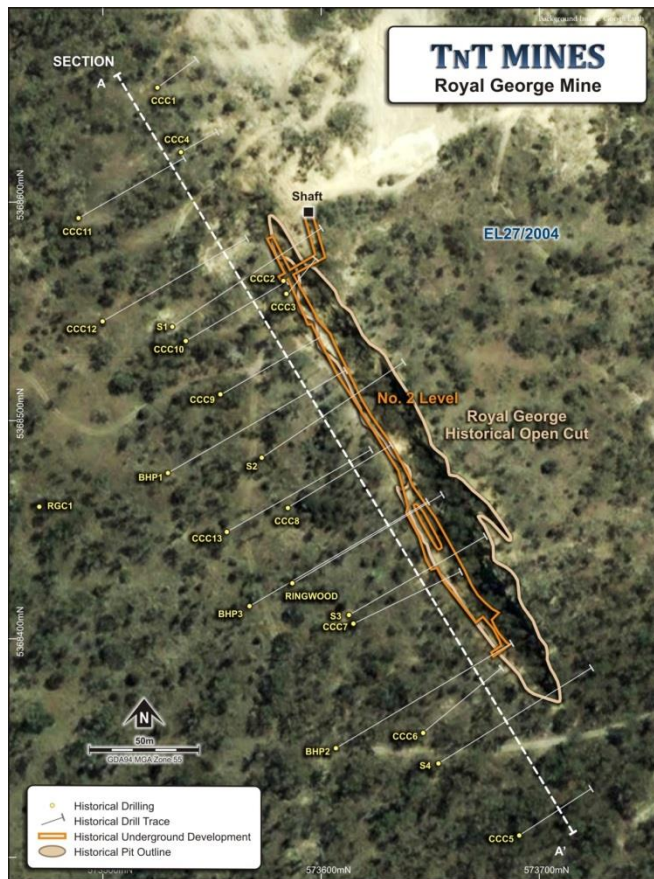
TNT MINES LIMITED

Niuminco Group Limited owns 72.54% of and manages, TNT Mines Limited (TNT). TNT holds a suite of advanced exploration areas in northern Tasmania prospective for tin, tungsten, magnetite and fluorspar.

During the quarter the Company announced the release of an Inferred Mineral Resource for TNT's 100% owned Royal George tin deposit.

Royal George is one of the largely unmined prospects within TNT's Aberfoyle Tin and Tungsten project. The project consists of the old workings and unmined mineralisation at the Aberfoyle, Storey's Creek and Lutwyche mines, as well as the largely unmined prospects at Great Pyramid and Royal George.

The Royal George tin deposit Inferred Mineral Resource has been estimated at 800,000t at 0.33% tin for 2640t of contained tin using a 0.2% cut-off.



EXPENDITURE AND FUTURE FUNDING

The Board and Management will continue to reduce the costs incurred by the Group wherever possible, and pursue funding strategies to advance the Group’s Papua New Guinea and TNT Mines Limited projects, including asset disposals where appropriate.

As outlined earlier in this report, and notwithstanding production difficulties in the past quarter, the gold production at Edie Creek is planned to increase during the September quarter to a level of 60 to 90 ounces per month, which would fund both operating and exploration costs over the next 12 months.

The Board will continue to investigate and pursue suitable fund raising opportunities to accelerate the exploration and development of our suite of projects in Papua New Guinea and, through TNT Mines Limited, in Tasmania.

To this end the Company has raised \$250,000 through the placement of 62,500,000 shares at \$0.004 and agreed to place (subject to shareholder approval) a further 7,953,428 shares at \$0.005 each to a company associated with Prof. Ian Plimer, a Director of Niuminco Group Limited, for which cash of \$39,767.14 was received. The Company has also placed 8,400,000 shares at \$0.005 per share in settlement of debt totalling \$42,000.

Mark Ohlsson

Mark Ohlsson
 Company Secretary
 30 July 2014

The information in this report that relates to exploration results is based on Information reviewed by Ian Plimer (BSc [Hons], PhD) who is a Fellow of the Australasian Institute of Mining and Metallurgy. Professor Plimer is a director of Niuminco Group Limited and has sufficient experience relevant to the style of mineralisation and type of deposit under consideration and to the activity he is undertaking to qualify as a Competent Person as defined in the 2012 Edition of the Australasian Code for Reporting of Exploration Results, Mineral Resources and Ore Reserves. He consents to the inclusion in the report of the matters based on this information in the form and context in which it appears

SCHEDULE OF TENEMENTS

| Permit Type | Permit Number | Location | Held Via | Beneficial % | Agreement Type |
|---|---------------|--------------------------------------|-----------------------------|--------------|-----------------------|
| NIUMINCO GROUP LIMITED – PAPUA NEW GUINEA ASSETS | | | | | |
| Exploration licence | EL 1438 | Bolobip | Niuminco (ND) Limited | 100 | |
| Exploration licence | EL 2087 | Hotmin | Niuminco (ND) Limited | 100 | |
| Exploration licence | EL 2088 | Ama | Niuminco (ND) Limited | 100 | |
| Exploration licence | EL 2089 | Wameimin | Niuminco (ND) Limited | 100 | |
| Exploration licence | EL 2090 | Fagobip | Niuminco (ND) Limited | 100 | |
| Exploration licence | EL 1441 | May River | Niuminco (ND) Limited | 100 | |
| Mining lease | ML 144 | Edie Creek | Niuminco Edie Creek Limited | 83 | Joint venture |
| Mining lease | ML 380 | Edie Creek | Niuminco Edie Creek Limited | 83 | Joint venture |
| Mining lease | ML 384-392 | Edie Creek | Niuminco Edie Creek Limited | 83 | Joint venture |
| Mining lease | ML 402-410 | Edie Creek | Niuminco Edie Creek Limited | 83 | Joint venture |
| Mining lease | ML 444-446 | Edie Creek | Niuminco Edie Creek Limited | 83 | Joint venture |
| Mining lease | ML 462 | Edie Creek | Niuminco Edie Creek Limited | 83 | Joint venture |
| TNT MINES LIMITED – TASMANIAN ASSETS* | | | | | |
| Retention licence | RL10/1988 | Moina | Geotech International P/L | 0 | Option to acquire 80% |
| Exploration licence | EL27/2004 | Aberfoyle Storeys Creek Royal George | TNT Mines Limited | 100 | |
| Retention licence | RL2/2009 | Great Pyramid | TNT Mines Limited | 100 | |
| Retention licence | RL1/2009 | Anchor | TNT Mines Limited | 100 | |
| Exploration licence | EL63/2004 | Oonah | Geoinformatics | 75 | Joint venture |

* Niuminco Group Limited has a 72.54% interest in TNT Mines Limited.